


REPAIR KIT PROFI


SPECIFICATION

	<p>HARDWOOD FLOORING REPAIR KIT PROFI</p>
	<p>BENEFITS:</p> <ul style="list-style-type: none"> • Perfect restoration of damaged surface; • Deep filling of defects; • Protection of wood defects from the moisture; • Universality of use; • For professionals
	<p>INGREDIENTS:</p> <p>Hard wax, electric solderer, professional trowel for application of waxes, lacquer finish, wool metal-coated fibre</p>

Meets the manufacturer's technological regulations

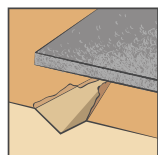
DESCRIPTION AND APPLICATION :

HARD WAX

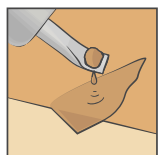
	<p>DESCRIPTION :</p> <p>Repair kit PROFI is used for preventing the defects and damages in natural wood products. Apply with solderer. Melting temperature: 81 °C. For internal work.</p>
	<p>INGREDIENTS :</p> <p>Mineral wax, mineral colouring pigments.</p>
	<p>BENEFITS :</p> <ul style="list-style-type: none"> • Wear-proof • Well restore the surface, does not crack, does not subside • It is possible to mix different colors of wax

APPLICATION :

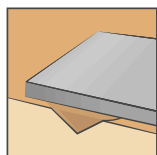
Important! Do not heat the wax above 81 °C and do not use an open flame for heating. In this case, the wax loses its properties and can change color. Melt the wax only with a soldering iron with a heated tip, warmed to the desired temperature. The optimal melting point is when the wax hangs from the tip of the soldering iron in the form of a drop, but does not fall and easily flows to the retouched surface when in contact. If the wax melts like water when it comes into contact with the soldering iron, the soldering iron is overheated. Full hardening time is 2 hours.



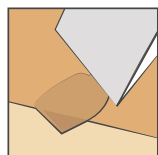
1. Polish the edges of the damage. You can bend the edges of the damage inside with a spatula.



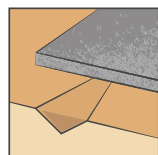
2. Apply the wax using a "slide" soldering iron. To achieve the desired color, you can mix waxes of different colors.



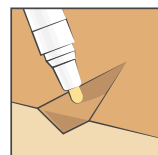
3. Immediately put a cold metal object on top of the wax for 5 seconds to cool the wax.



4. Remove excess of wax from the surface with a spatula (the side of the spatula with sharp teeth for a smooth surface, with rounded teeth – for corners).



5. Polish the surface (with woolen metallized fiber).



6. Cover the retouched area with laquer.

REPAIR KIT PROFI

SPECIFICATION

ELECTRIC SOLDERER



DESCRIPTION :

Electric solderer for melting, mixing and applying waxes. The maximum temperature is 100 °C.

PROFESSIONAL TROWEL FOR APPLICATION OF WAXES



DESCRIPTION :

Used to remove excess hard waxes. Caused by specially designed grooves on the surface of the spatula, excess wax is evenly removed without damaging the surface. The spatula cover is designed to extend the edges of dents before filling the dent with hard wax.

LAQUER FINISH



DESCRIPTION :

Plane the gloss level of the retouched area and the main surface. Protects waxes and paints from contamination during further operation of the product.

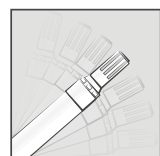
BENEFITS :

- Colorless
- Resistant to mechanical impact, water, sun, UV
- It differs in the degree of gloss

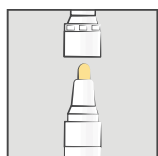
Important!

- Correctly activate the laquer before the first use, otherwise the laquer will be consumed unevenly in the future;
- Before each application, the laquer must be shaken to mix the components well, otherwise the coating will not have the above properties;
- When the laquer is not used – keep the cap tightly closed.

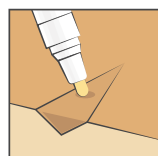
Activating the marker before first use :



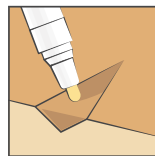
1. Shake the marker for 30 seconds.



2. Raise the marker vertically, tip up. Open the cap.

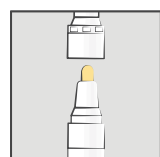


3. Turn the marker tip down and press the tip on the surface until the varnish appears.

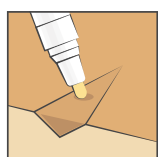


4. The marker is ready to use.

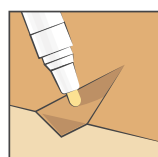
Application :



1. After activating the marker, lift the marker vertically, tip up. Open the cap.



2. Turn the marker tip down and press the tip on the surface until the laquer appears.



3. Process of restoring area.

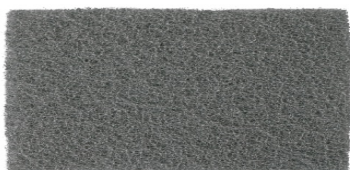


REPAIR KIT PROF1

COSWICK COATINGS & ADHESIVES

SPECIFICATION

WOOL METAL-COATED FIBER

**DESCRIPTION :**

For delicate surface levelling and grinding and giving various degrees of gloss:
– slowly grind and press hard-matting the surface;
– quickly grind without pressing-gives shine.
It is also used for cleaning the tip of the soldering iron.

STORAGE CONDITIONS :

Keep at temperature from 5°C to 25°C, the lid should be tightly closed. Keep away from frost.

SAFETY REQUIREMENTS:

For intended use only. Keep out of reach of children.

DISPOSAL :

This material and its container must be disposed of in accordance with the requirements of legislation on environmental protection and materials disposal.